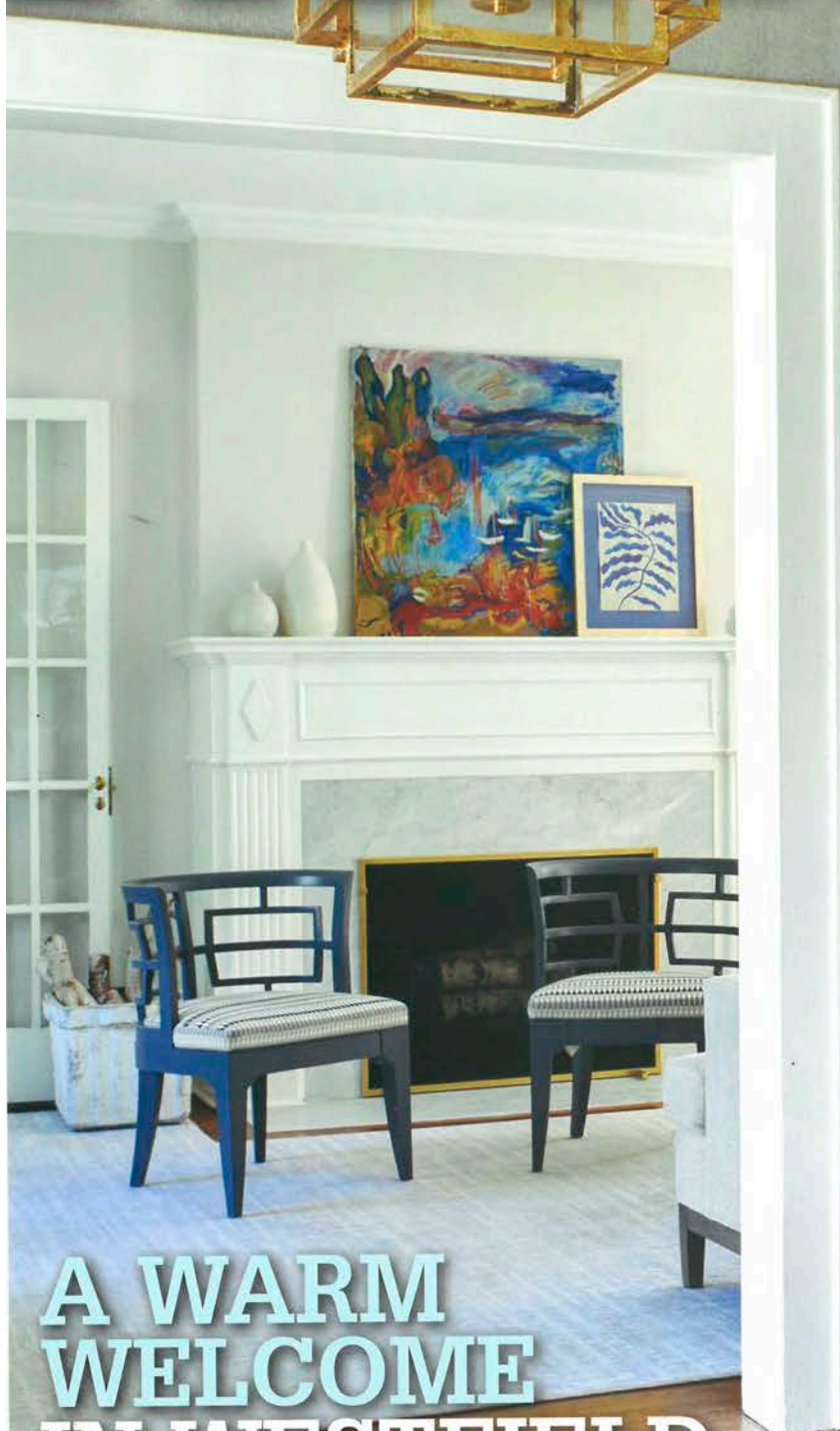


IN Home

FALL 2020



**A WARM
WELCOME
IN WESTFIELD**



**SPARTA HOME
SHINES AFTER FIRE**

**DESIGNER CHALLENGE:
YOUR VOTE COUNTS**

**REDO AND A VIEW
IN VERONA**

rhapsody in blue

Pattern and color harmonize in an elegantly redone Upper Saddle River kitchen.

Text by **Donna Rolando**
Design by **Anthony Albert Passanante**
Photography by **Wing Wong**

Taste is joyfully apparent in one Upper Saddle River kitchen before anyone even starts to cook. That's because of a makeover that combines elegant functionality with a sleek, modern look. The heart of the home for a family with two kids, ages 8 and 5, the kitchen is inspiring new recipes these days, says the homeowner mom, with its ease of motion for both daily life and entertaining.

"The flow of the [old] kitchen didn't make much sense," she explains. "It always felt hectic, crowded, not usable." Yet as the biggest project in the '90s colonial, the kitchen landed on the back burner when the family moved in about two years ago, despite a list of undesirable fea-

What bliss for a family that loves the color blue and wanted a modern vibe for their kitchen! Designer Anthony Albert Passanante steered away from navy and baby blue and toward a more "striking" gray-infused shade, which harmonizes with the quartz counters and floor tile in travertine-like hues. There is drama in the hood created by Passanante's metal artisan, but nothing like the wow in the chevron backsplash of assorted stone. Many of the room's elements are one-of-a-kind.







This page: Martini, anyone? This conveniently located bar continues the gray-blue hues in its custom cabinetry but with a softer backsplash. Just ahead in the kitchen is the quartz-topped island lined with blue-leather-topped stools over a satin brass base that ties in the cabinet hardware. Opposite page: Dazzle meets minimalism in the modern makeover of this '90s kitchen. The Restoration Hardware dome lights over the sleek island were chosen by the homeowner for their glass design, which doesn't stand in the way of the backyard vista. Floating walnut shelves with copper cookware complete the look.



tures including a stove top smack in the middle of an island.

When it finally came time in 2019 to transform the kitchen from traditional to modern, the couple reached out to Anthony Albert Passanante, a certified master kitchen and bath designer from Waldwick's Anthony Albert Studios, and he delivered on all counts, including added counter space. Both husband and wife cook—usually while the kids are being entertained nearby. Now they have a designated work area in a design geared to their lifestyle needs as well as to their aesthetic wishes.

"The style didn't fit their narrative," says Passanante, recalling the old kitchen. He also knew they were fans of the color blue. So he introduced a grayish blue with "a rich tone" for the cabinets on the island and perimeter and teamed it up with counters that mimic Calacatta marble's veining in easy-care quartz. Passanante's studio created these cabinets so that they max every inch of space—a necessary touch, along with a 9-foot-tall pantry, because the family's minimalist style meant less cabinetry. Another no-fuss element is the large-tile flooring, which hints of natural travertine, although it's actually

porcelain in complementary shades.

The simplicity of the design allowed Passanante to get a little wild with the sizable backsplash. Custom-made for the space through Mediterranean Tile in Fairfield, the chevron mix of stone in various hues is what he calls a "big wow factor," and the family loved it at first sight. "It's a pop; it's dramatic, but it also ties in all the colors; it ties in the kitchen," the homeowner says. The gray-blue continues in the bar area, where the backsplash softens a bit with a herringbone pattern of dolomite.

To cook up those new recipes, the 36-inch-wide Wolf stainless-steel stove is all business with an artisan-crafted hood, as is the three-foot-wide sink from The Galley, always up to the task with removable cutting board, a colander and other accessories. Another focal point, the Restoration Hardware twin dome lights, which the homeowners selected, are mostly glass with brass trim—they wanted nothing to block the backyard view from the enlarged windows.

"It's a completely different look, and the family absolutely gets more use out of it," says the homeowner of the new space. With all this inspiration, arrive hungry; you never know what's for dinner.